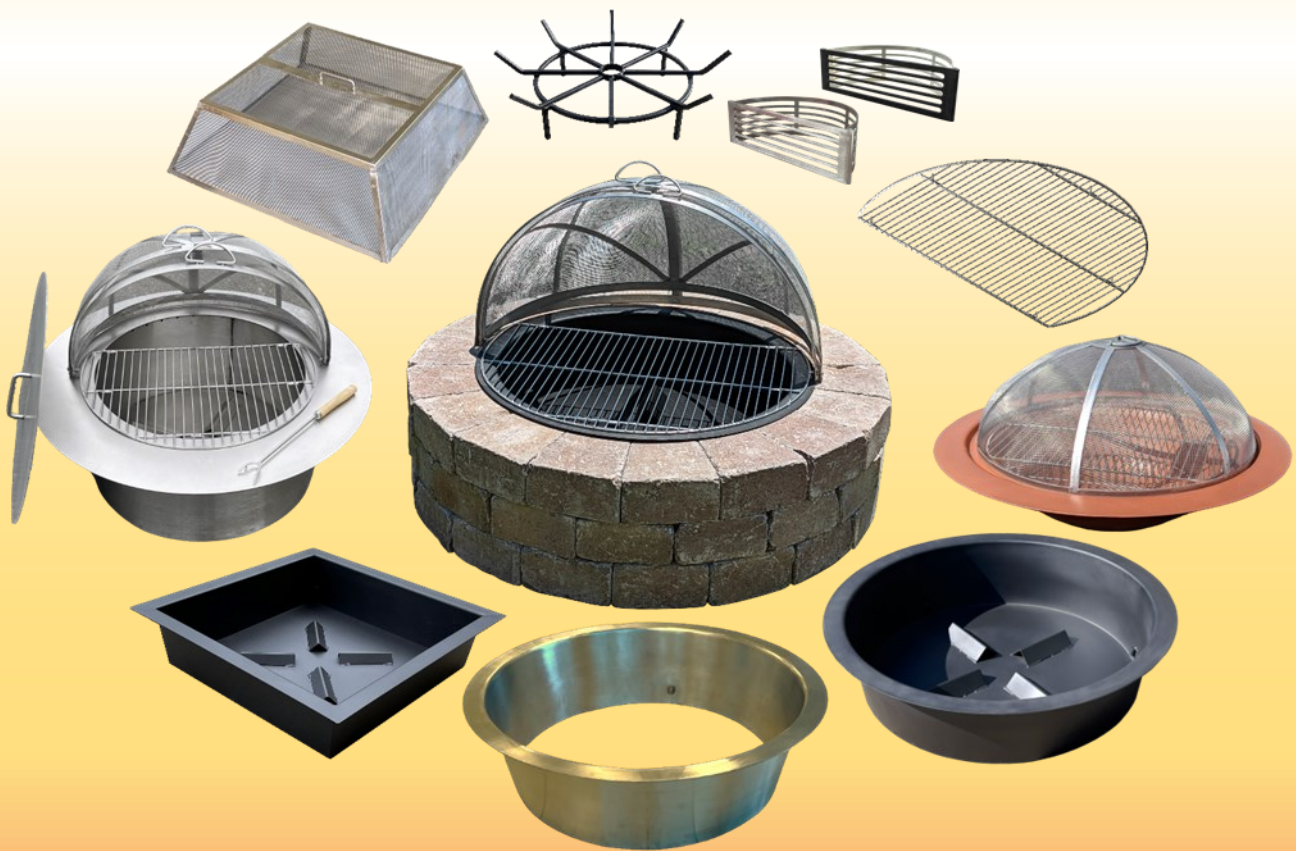




# Beautifully Crafted & Ruggedly Designed Firepit Kits



**The Firepit Source** <sup>LLC</sup> 

[www.thefirepitsource.com](http://www.thefirepitsource.com)

# Firepit Kits

## Everything You Need For Your Block Firepit

### Round Firepit Kits



- ◆ Round firepit kit includes:
  - ◇ **Insert**, stainless steel or black powder coat
    - ◇ Available with or without bottom
  - ◇ **Cooking grate**, stainless steel
  - ◇ **Spark screen**, stainless steel, hinged or one-piece
  - ◇ **Poker/lifter**, stainless steel, wood handle
- ◆ Available in two sizes that fit block openings from 29" - 32"

### Square Firepit Kits



- ◆ Square firepit kit includes:
  - ◇ **Insert**, available with or without bottom
  - ◇ **Cooking grate**, stainless steel
  - ◇ **Spark screen**, stainless steel, one-piece (not hinged)
  - ◇ **Poker/lifter**, stainless steel, wood handle
- ◆ Available in two sizes that fit 24" and 28" block openings

### LoSmoke Firepit Kits



- ◆ LoSmoke firepit kit includes:
  - ◇ **LoSmoke insert**, black or stainless steel
  - ◇ **Spark screen**, stainless steel, hinged or one-piece
  - ◇ **Lid**
  - ◇ **Poker/lifter**, stainless steel, wood handle
- ◆ Available with or without a stainless steel **Cooking Grate**
- ◆ Fits block opening of 27.5" to 33" inside diameter

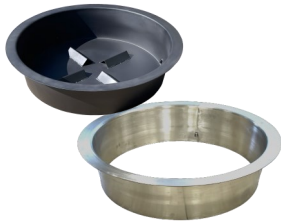
### Fire Bowl Kits



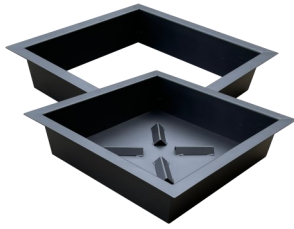
- ◆ Fire bowl kit includes:
  - ◇ **Fire bowl**, copper colored
  - ◇ **Wood grate**, stainless steel
  - ◇ **Cooking grate**, stainless steel
  - ◇ **Spark screen**, stainless steel, hinged or one-piece
  - ◇ **Poker/lifter**, stainless steel, wood handle
- ◆ Fits pit openings from 29" to 32" diameter
- ◆ Formed seats keep the grates and screen in place
- ◆ Drain holes also promote airflow from below

# Kit Components

## Standard Inserts: Where Every Great Fire Starts



- ◆ Round inserts available in stainless steel or high-quality steel with black powder coat finish
- ◆ Wide 2" flange
- ◆ Tapered body allows inserts to nest together, saving valuable inventory space
- ◆ All inserts available with or without a bottom
  - ◇ Inserts with a bottom allow easy ash removal and easy access to manage the fire
  - ◇ Bottoms include eight drain holes, also promote airflow from below
- ◆ Round inserts available in two sizes that fit block openings from 29" - 32" diameter



## LoSmoke Inserts: For Great Fires with Little Smoke



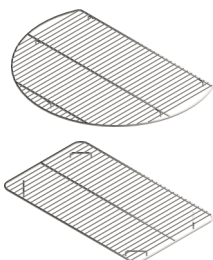
- ◆ Offered in stainless steel or black powder coated steel
- ◆ Fits firepits having 27.5" to 33" inside diameter
- ◆ Drain holes prevent standing water and promote airflow
- ◆ LID INCLUDED!

## Spark Screens: Reduce Flying Embers



- ◆ Stainless steel construction ensures lasting fit and finish
- ◆ Round screens:
  - ◇ Available in hinged or one-piece construction
  - ◇ Three sizes available that work with the 29" and 31" round inserts, LoSmoke inserts and bowl kits
- ◆ Square screens:
  - ◇ One-piece construction
  - ◇ Two sizes available that work with the 24" and 28" square inserts

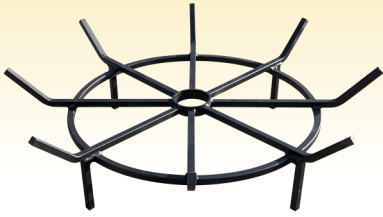
## Cooking Grates: Outdoor Grilling Essentials



- ◆ Stainless steel construction ensures lasting performance
- ◆ Designed to fit round or square inserts
- ◆ Lay-flat design eliminates need for brackets on inserts
- ◆ Shape allows access to fire with the cooking grate in place

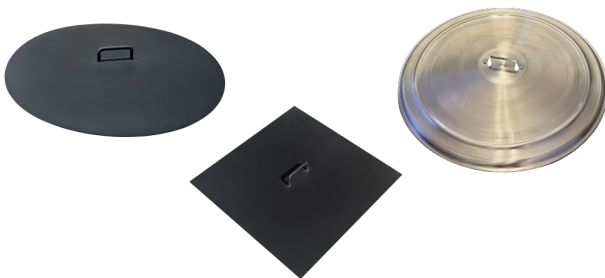
# Firepit Accessories

## Log Grates: Elevate Your Fire for Proper Airflow



- ◆ Multi-spoked design of formed and welded steel bar stock
- ◆ 26.5" diameter spider shape holds ample amounts of wood
- ◆ Aids with building fire and airflow for hotter, cleaner fires
- ◆ Fits 29" round, 31" round and 28" square inserts
- ◆ Black powder coat

## Lids: Cover Your Firepit When Not in Use



- ◆ Steel construction
- ◆ Welded handle
- ◆ Black powder coat
- ◆ NEW stainless steel design in 2024

## Vents/Intakes: Reduce smoke and increase efficiency



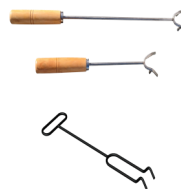
- ◆ Stainless steel or black galvanized steel
- ◆ Sized specifically for each popular block fire pit
- ◆ No cutting, drilling or hardware needed

## Covers: Protect Your Investment From the Elements



- ◆ Heavy duty vinyl
- ◆ Round covers fit block pits up to 53" diameter
- ◆ Square covers fit block pits up to 54" square

## Pokers/Lifters: Tend to Your Fire and Lift Hot Spark Screens



- ◆ Available in two styles:
- ◆ Stainless Steel with Wood Handles (16" or 24")
- ◆ Black Carbon Steel (16")

**The Firepit Source** LLC 

**Ellen Cronan**

**802-349-2059**

**ellenc@thefirepitsource.com**

**www.thefirepitsource.com**

